

VISION **1** MILLION

ARE WE READY? SCORECARD

Waterloo Region stands at the threshold of transformative growth, with projections indicating our population will reach 1 million residents within the next 25 years—an increase of over 300,000 people. Currently, our housing supply, transportation infrastructure, healthcare services, employment opportunities, and social infrastructure is not advancing at the pace needed overall to support this expansion.

To address this challenge proactively, BestWR has developed a scorecard that will track our collective progress and guide our advocacy efforts with government and private sector partners. This living document will be updated regularly to help prioritize our community's agenda, focusing resources where they're most needed.

While the scorecard doesn't encompass every aspect of growth management, it concentrates on key initiatives that community members and business leaders have consistently identified as critical areas requiring immediate action. Though we've incorporated extensive feedback during its development, we welcome your additional insights and, most importantly, your active support in this vital regional initiative.

MEASUREMENTS

NEEDS ATTENTION

IN PROGRESS

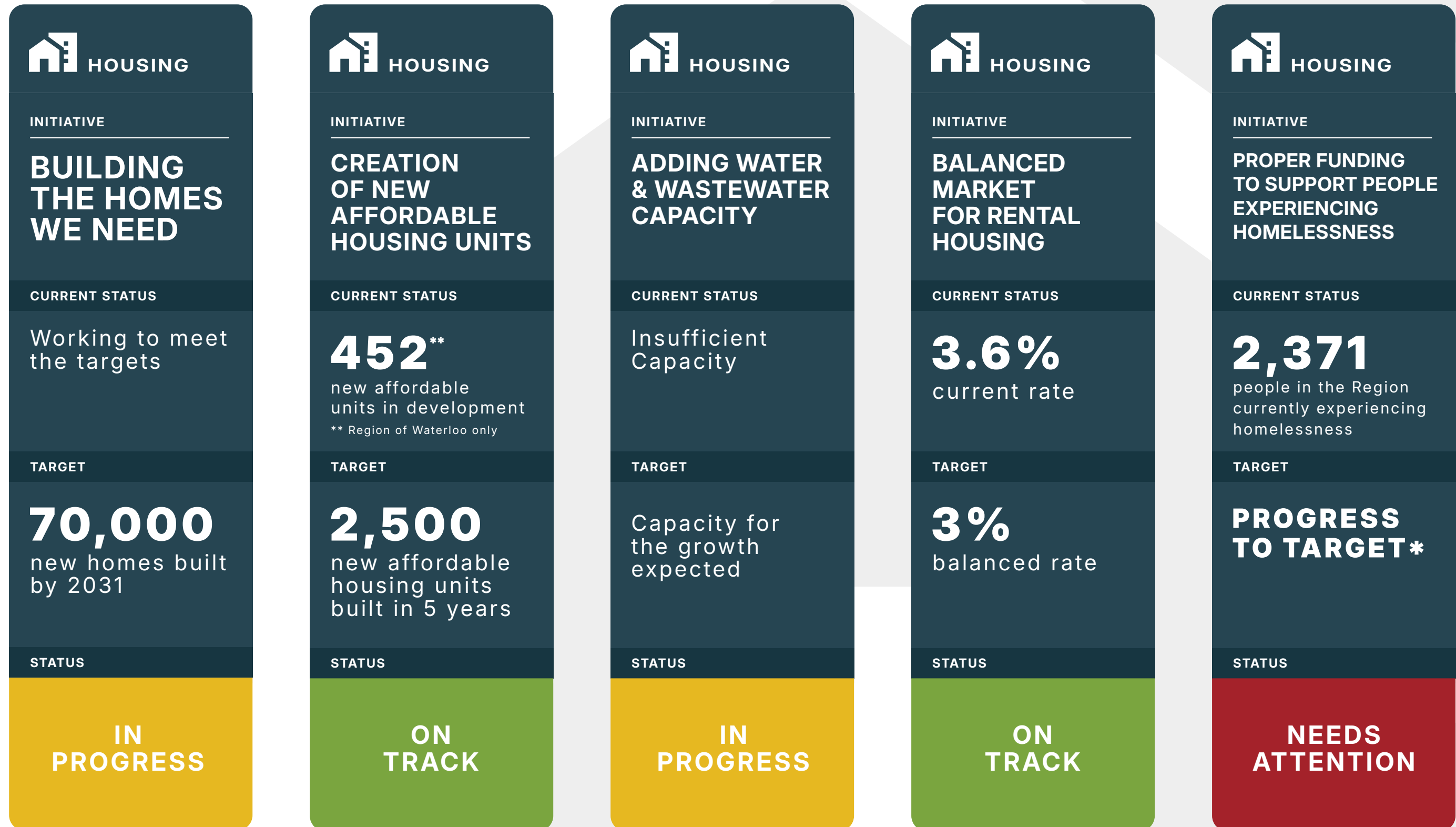
ON TRACK

ACHIEVED

VISION **1** MILLION

ARE WE READY? SCORECARD AT A GLANCE





* Full plans are being validated with the support of the Future Cities Initiative team at the University of Waterloo and will be available shortly.



TRANSPORTATION

ARE WE READY? SCORECARD


TRANSPORTATION	TRANSPORTATION	TRANSPORTATION	TRANSPORTATION	TRANSPORTATION
<p>INITIATIVE</p> <p>INVESTING IN RAIL & TRANSIT INFRASTRUCTURE</p>	<p>INITIATIVE</p> <p>NEW HIGHWAY 7</p>	<p>INITIATIVE</p> <p>EXPANDING YKF</p>	<p>INITIATIVE</p> <p>INCREASED USE OF PUBLIC TRANSIT</p>	<p>INITIATIVE</p> <p>BETTER GO TRAIN SERVICING THE REGION</p>
<p>CURRENT STATUS</p>	<p>CURRENT STATUS</p>	<p>CURRENT STATUS</p>	<p>CURRENT STATUS</p>	<p>CURRENT STATUS</p>
<p>Work ongoing to advance each project:</p> <ul style="list-style-type: none"> • Two-way all-day GO train service (2026) • King-Victoria Transit Hub • Stage 2 LRT • Breslau GO 	<p>Verbal commitment made</p>	<p>Planning work and economic case built</p>	<p>Waiting for results</p>	<p>19 daily weekday trips</p>
<p>TARGET</p>	<p>TARGET</p>	<p>TARGET</p>	<p>TARGET</p>	<p>TARGET</p>
<p>Completion of all projects</p>	<p>Construction complete</p>	<p>Runway expansion</p>	<p>27% Increase by 2035</p>	<p>44 daily weekday trips</p>
<p>STATUS</p>	<p>STATUS</p>	<p>STATUS</p>	<p>STATUS</p>	<p>STATUS</p>
<p>IN PROGRESS</p>	<p>IN PROGRESS</p>	<p>IN PROGRESS</p>	<p>IN PROGRESS</p>	<p>IN PROGRESS</p>

* Full plans are being validated with the support of the Future Cities Initiative team at the University of Waterloo and will be available shortly.



HEALTHCARE

ARE WE READY? SCORECARD

 HEALTHCARE

INITIATIVE

NEW HOSPITAL

CURRENT STATUS


\$15M in planning grants received

TARGET

Significant milestones achieved annually

STATUS

ON TRACK

 HEALTHCARE

INITIATIVE

RESIDENTS CONNECTED TO A DOCTOR

CURRENT STATUS

400 doctors needed

TARGET

400 Additional doctors needed to reach the Ratio of 1:1000 (Doctor/Residents)

STATUS

NEEDS ATTENTION

 HEALTHCARE

INITIATIVE

IMPROVED ACCESS TO LTC

CURRENT STATUS


1,476 new beds announced by province

TARGET

3,000

STATUS

NEEDS ATTENTION

 HEALTHCARE

INITIATIVE

ACUTE CARE

CURRENT STATUS

- 2.85 hours wait time to see a provider in WRHN
- Current ambulance response time is 7 m 18s
- TBC on mental health indicator

TARGET

PROGRESS TO PLAN*

STATUS

NEEDS ATTENTION

* Full plans are being validated with the support of the Future Cities Initiative team at the University of Waterloo and will be available shortly.

 EMPLOYMENT & JOBS	 EMPLOYMENT & JOBS	 EMPLOYMENT & JOBS	 EMPLOYMENT & JOBS	 EMPLOYMENT & JOBS	 EMPLOYMENT & JOBS	 EMPLOYMENT & JOBS
<p>INITIATIVE</p> <p>ADDING EMPLOYMENT LANDS</p>	<p>INITIATIVE</p> <p>SHOVEL READY MEGASITE</p>	<p>INITIATIVE</p> <p>SECURING THE JOBS NEEDED</p>	<p>INITIATIVE</p> <p>STRONG REGIONAL EMPLOYMENT</p>	<p>INITIATIVE</p> <p>LEADING REGION FOR TECH TALENT</p>	<p>INITIATIVE</p> <p>POST SECONDARY INVESTMENT</p>	<p>INITIATIVE</p> <p>ELECTRICAL CAPACITY</p>
<p>CURRENT STATUS</p>	<p>CURRENT STATUS</p>	<p>CURRENT STATUS</p>	<p>CURRENT STATUS</p>	<p>CURRENT STATUS</p>	<p>CURRENT STATUS</p>	<p>CURRENT STATUS</p>
<p>Currently have 1072 hectares + bought 456 hectares</p>	<p>70% of land purchased</p>	<p>200,000 jobs created</p>	<p>70% participation rate 7.6% unemployment rate</p>	<p>#1 in small tech talent market and #18 overall</p>	<p>Lower cost per capita funding in Canada</p>	<p>TBC</p>
<p>TARGET</p>	<p>TARGET</p>	<p>TARGET</p>	<p>TARGET</p>	<p>TARGET</p>	<p>TARGET</p>	<p>TARGET</p>
<p>PROGRESS TO PLAN*</p>	<p>100% of the land assembled</p>	<p>300,000 jobs created</p>	<p>67-70% participation rate 6% unemployment rate</p>	<p>Global rankings for small tech talent and overall tech talent</p>	<p>PROGRESS TO PLAN*</p>	<p>Sufficient capacity for the new growth</p>
<p>STATUS</p>	<p>STATUS</p>	<p>STATUS</p>	<p>STATUS</p>	<p>STATUS</p>	<p>STATUS</p>	<p>STATUS</p>
<p>NEEDS ATTENTION</p>	<p>ON TRACK</p>	<p>IN PROGRESS</p>	<p>ON TRACK</p>	<p>IN PROGRESS</p>	<p>NEEDS ATTENTION</p>	<p>IN PROGRESS</p>

* Full plans are being validated with the support of the Future Cities Initiative team at the University of Waterloo and will be available shortly.



PLACEMAKING & LIVABILITY

ARE WE READY? SCORECARD

 PLACEMAKING & LIVABILITY	 PLACEMAKING & LIVABILITY	 PLACEMAKING & LIVABILITY	 PLACEMAKING & LIVABILITY	 PLACEMAKING & LIVABILITY	 PLACEMAKING & LIVABILITY
<p>INITIATIVE</p> <p>NEW TOURISM AND RECREATION FACILITIES</p>	<p>INITIATIVE</p> <p>INCREASES IN SPACES IN SCHOOLS</p>	<p>INITIATIVE</p> <p>ENSURING THERE IS CHILD CARE FOR EVERYONE WHO NEEDS IT</p>	<p>INITIATIVE</p> <p>REDUCING GHG</p>	<p>INITIATIVE</p> <p>CREATING A SAFER COMMUNITY</p>	<p>INITIATIVE</p> <p>INCREASING OUR SOCIAL INFRASTRUCTURE</p>
<p>CURRENT STATUS</p>	<p>CURRENT STATUS</p>	<p>CURRENT STATUS</p>	<p>CURRENT STATUS</p>	<p>CURRENT STATUS</p>	<p>CURRENT STATUS</p>
<p>Convention centre feasibility study and accommodation needs assessment complete</p>	<p>97% WRDSB 117% WCDSB</p>	<p>9,200 on the wait list</p>	<p>12% reduction</p>	<p>75.5 Severity Level of policy reported crime</p>	<p>We need to ensure that our growth brings us together and supports unique perspective, new experiences and identity</p>
<p>TARGET</p>	<p>TARGET</p>	<p>TARGET</p>	<p>TARGET</p>	<p>TARGET</p>	<p>TARGET</p>
<ul style="list-style-type: none"> • Progress on the convention centre • Recreation facilities added • Progress to 400 4 - star rooms 	<p>PROGRESS TO TARGET*</p>	<p>PROGRESS TO TARGET*</p>	<p>PROGRESS TO PLAN*</p>	<p>PROGRESS TO PLAN*</p>	<p>PROGRESS TO PLAN*</p>
<p>STATUS</p>	<p>STATUS</p>	<p>STATUS</p>	<p>STATUS</p>	<p>STATUS</p>	<p>STATUS</p>
<p>NEEDS ATTENTION</p>	<p>IN PROGRESS</p>	<p>IN PROGRESS</p>	<p>IN PROGRESS</p>	<p>IN PROGRESS</p>	<p>IN PROGRESS</p>

* Full plans are being validated with the support of the Future Cities Initiative team at the University of Waterloo and will be available shortly.

VISION **1** MILLION

ARE WE READY? - INQUIRIES AND FEEDBACK

The Scorecard is a community initiative led by BESTWR with support from our partners at the Future Cities Institute.

ABOUT BESTWR

The Business and Economic Support Team of Waterloo Region (BestWR) is comprised of five leading business organizations working as partners for economic prosperity and community needs. Currently chaired by the Greater Kitchener Waterloo Chamber of Commerce, BestWR includes: Communitech, the Cambridge Chamber of Commerce, Explore Waterloo Region, and the Waterloo Region Economic Development Corporation.

ABOUT FUTURE CITIES INSTITUTE

[The Future Cities Institute](#) was founded by CAIVAN at the University of Waterloo to help local governments build better cities. The institute brings together global thinkers, industry leaders, and researchers to tackle urban challenges across housing, climate, infrastructure, and beyond, supporting healthy, prosperous cities that are resilient, inclusive, and built for the future.

INFO@BESTWR.ORG